



SKAMOLEX.... Highlight your fire

A new concept for lining gasfires, fireplaces and stoves. Ideal for register plates, heat shields or replacing firebricks. Skamolex panels and bricks are made from Exfoliated Vermiculite and have excellent very high temperature resistance suitable for hotface applications up to 1100°C. The boards and blocks are easily cut to size with woodworking tools, the linings contain no Ceramic or Asbestos fibres are non-dusting, non-irritant and odourless.



SKAMOLEX - The original moulded Vermiculite panels

20MM BRICK, BRICKETTE, REEDED (PORTRAIT) AND PLAIN
20mm x 610 x 1000 *High Density Board 700kg. per cubic metre



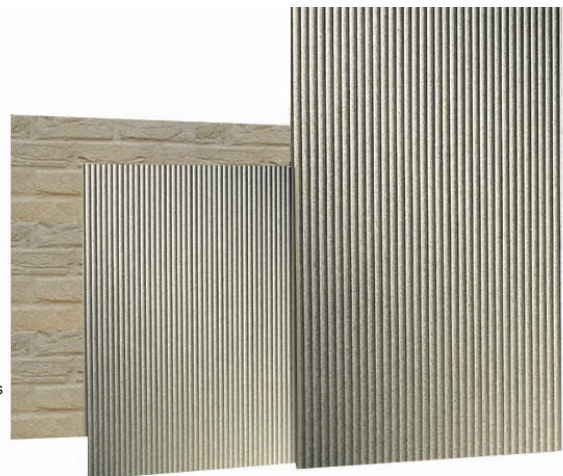
Brick Faced Portrait Panel are 500wide x 1000mm High. Reeded 20mm thick panels are available portrait only. 20mm x 610 x 1000, natural colour or black.

PLAIN SKAMOLEX Density 600kg per cubic metre
30mm x 610 x 1000 Unpatterned Board
25mm x 610 x 1000 Unpatterned Board
25mm x 500 x 1000 Unpatterned Board
16mm x 610 x 1000 Unpatterned Board



25mm x 230 x 114 (nominal) Unpatterned Bricks

25MM REEDED, AND ANTIQUE BRICK PANELS
25mm x 610 x 1000* High Density Board 700kg. per cubic metre



* Note: Reeded Patterns are available Portrait & Landscape.